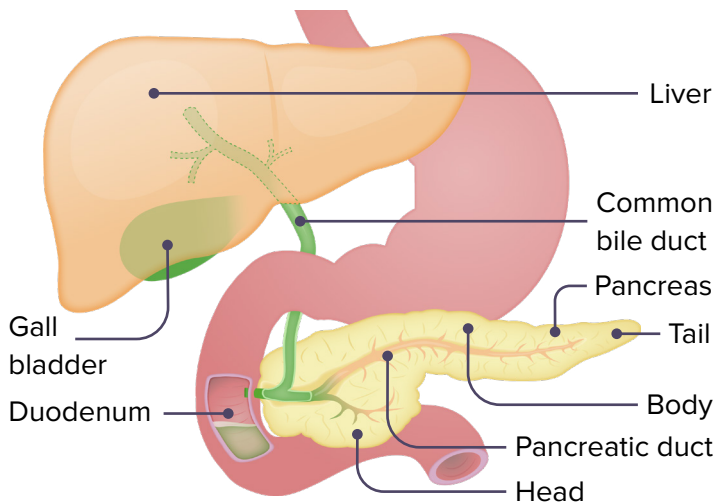


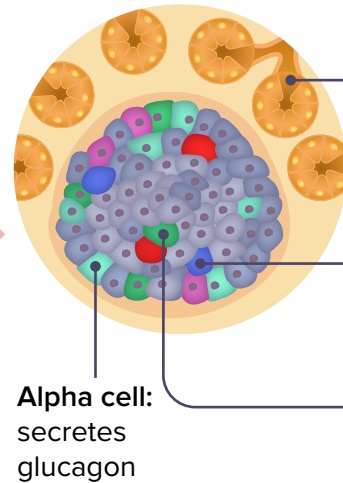
REVIEW OF PANCREATIC FUNCTION



Anatomy



Islets of Langerhans: group of cells in the pancreas that secrete hormones



Acinar and duct cells: secrete pancreatic enzymes

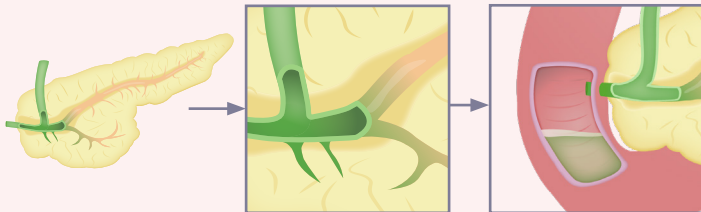
Delta cell: secretes somatostatin

Beta cell: secretes insulin

Alpha cell: secretes glucagon

Pancreatic Exocrine and Endocrine Functions

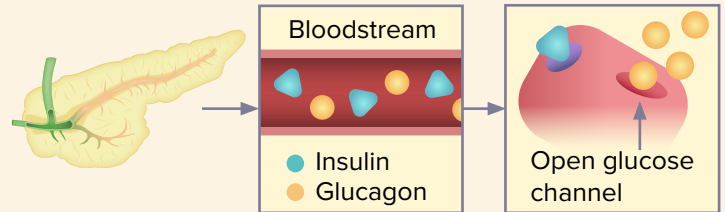
Exocrine function



Secretes pancreatic enzymes into common bile duct

Enzymes break down food in the duodenum.

Endocrine function



Secretes insulin and glucagon into the bloodstream

Insulin and glucagon control glucose levels.

Hormone released	Lipase	Amylase	Glucagon	Insulin	Somatostatin
Effect	Pancreatic enzymes digest proteins, fats, carbohydrates, and nucleic acids, as well as electrolytes and a small amount of mucus.		Raises blood glucose	Lowers blood glucose	Inhibits glucagon and insulin secretion

NOTES

