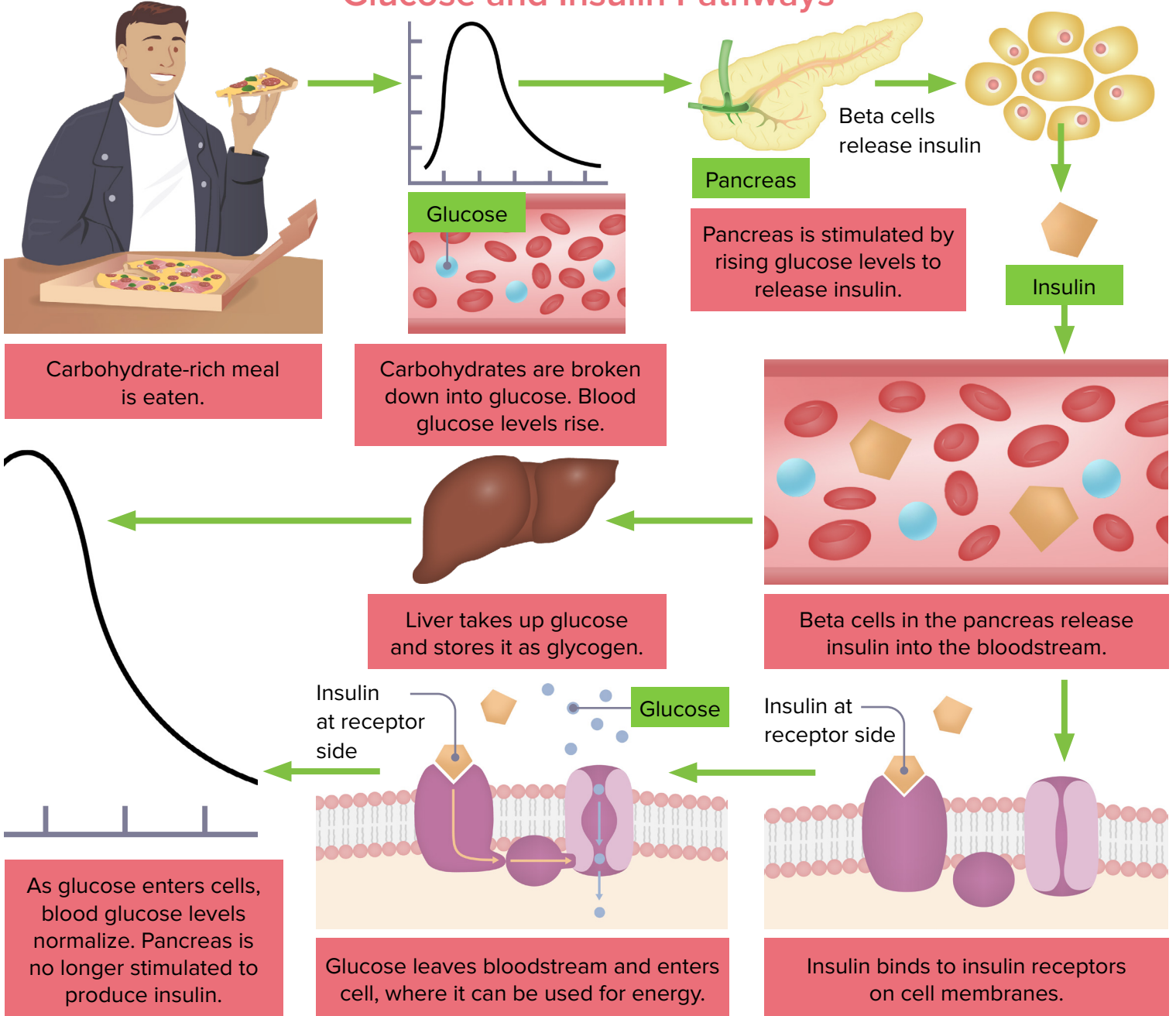


REVIEW OF INSULIN AND GLUCOSE CONTROL



- Glucose is the main carbohydrate used by the body for energy.
- Glucose is always present in the blood.
- In order for glucose to be used, it must enter the tissues with the help of insulin.
- Insulin and glucose pathways are an example of a negative feedback loop.

Glucose and Insulin Pathways



NOTES

