

CHANGING A PICC DRESSING



Peripherally Inserted Central Catheter (PICC) Dressing Change Kit



Sterile gloves



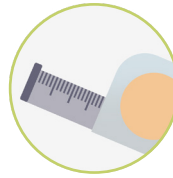
Transparent antimicrobial dressing



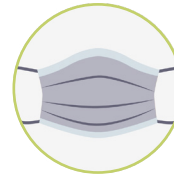
Chlorhexidine swab



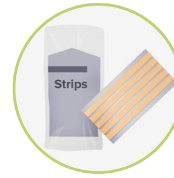
Skin protectant



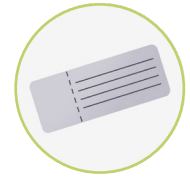
Tape measure



Mask



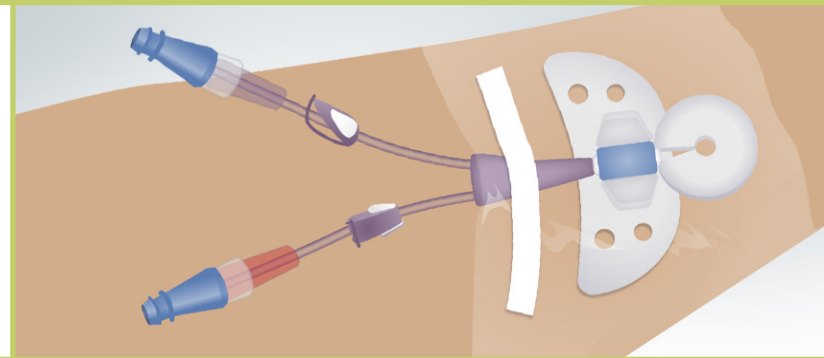
Steri-strips



Label

Pre-Procedure

1. Perform hand hygiene.
2. Provide privacy.
3. Explain procedure.
4. Raise bed to appropriate height.
5. Extend limb with PICC. Place in dependent position.
6. Prepare equipment on clean, dry surface.

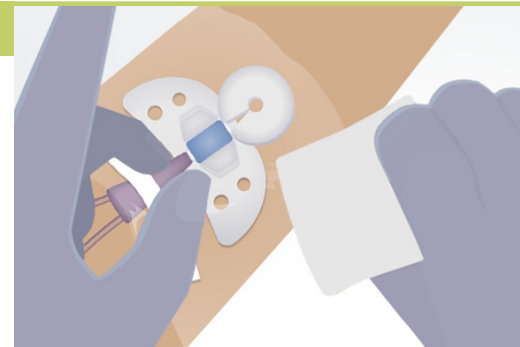


Procedure

1. Perform hand hygiene.
2. Apply mask and clean gloves.
3. Instruct client to turn head away from site, or place mask on client.
4. Remove old dressing and discard.
5. Remove stabilization device or steri-strips, being careful not to dislodge catheter.
6. Inspect catheter, site, and surrounding skin.
7. Measure limb circumference above insertion site and compare to baseline.
8. Measure external PICC length and compare to baseline.
9. Remove and discard gloves. Perform hand hygiene.
10. Open dressing change kit.
11. Apply sterile gloves.
12. Cleanse site and tubing with chlorhexidine and allow to dry.
13. Apply skin protectant and allow to dry.
14. Apply new catheter stabilization device or steri-strips.
15. Apply sterile transparent semipermeable dressing over insertion site.
16. Remove gloves, and perform hand hygiene.
17. Date, time, initial and attach label to dressing.
18. Dispose of soiled supplies.
19. Document procedure, measurements, and client response.

CLINICAL TIP:

Inspect dressing and site every four hours, and as per facility policy. Change dressing weekly, or when wet, loose, or soiled.



NOTES

