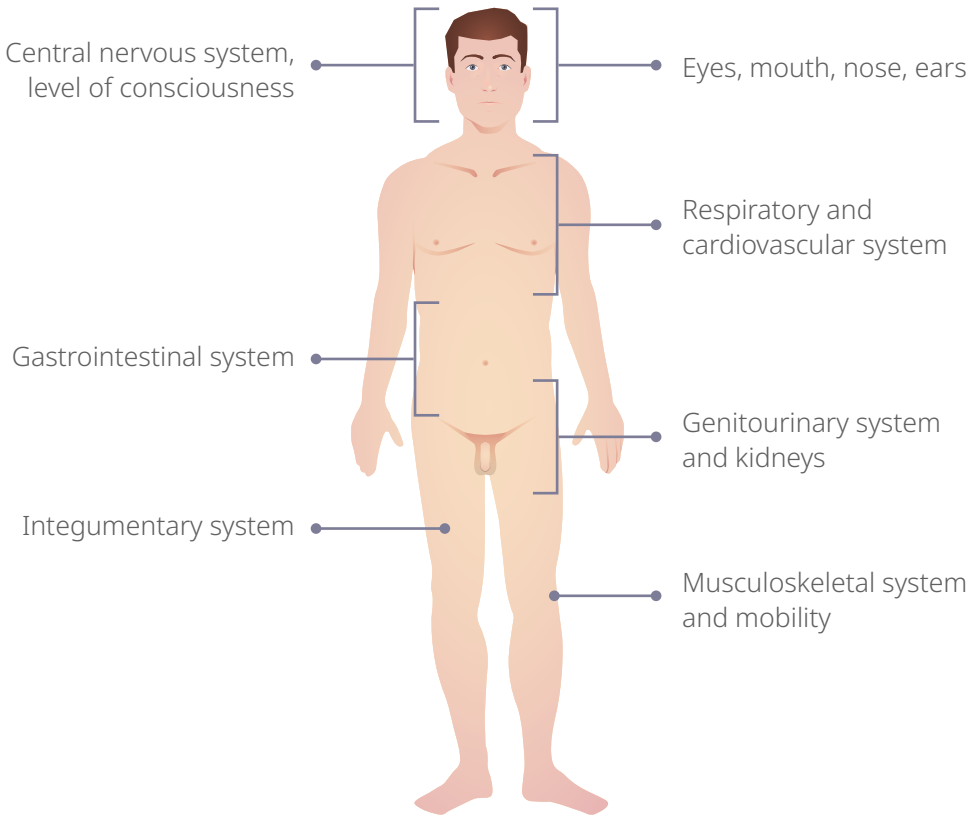




# HEAD-TO-TOE ASSESSMENT



## Body systems



Assess any devices such as drains, tubes, and IV lines

### NURSING NOTE

Organize your assessment!

1. Be systematic
2. Compare sides
3. Take notes

### PAY ATTENTION

For an abdominal assessment you inspect, auscultate, percuss, then palpate.

## 4 Primary tools of assessment

