

## AECT Education in Health Professions Special Interest Group (EDHP-SIG) Subscribing to and Unsubscribing from the EDHP Listserv

### Vision and Mission Statements

The vision of the Education in the Health Professions Special Interest Group (EDHP-SIG) of the [Association for Educational Communications and Technology](#) (AECT) is to help, “ensure healthy lives and promote well-being for all at all ages.”<sup>1</sup> To achieve our vision, the EDHP SIG will seek to advance the professional practice of healthcare professionals and instructional designers by fostering transdisciplinary collaboration and communications, promoting immersion and the sharing of ideas and resources, and by facilitating evidence-based education, training, and professional development of healthcare professionals and their clients.

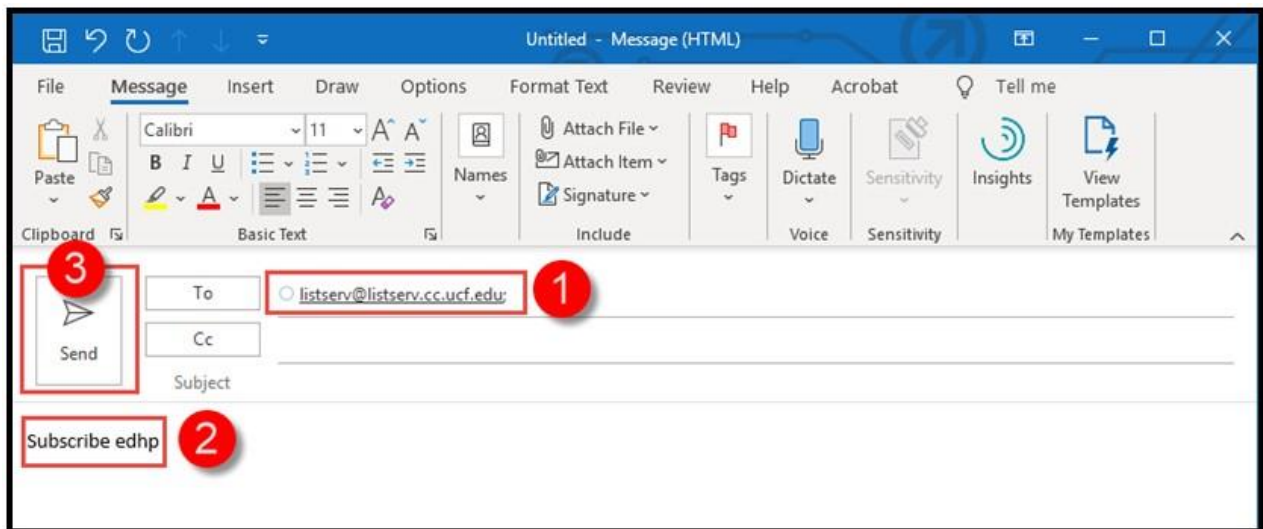
### EDHP Listserv Members

The EDHP Listserv has been created to facilitate communication among all members of the EDHP Special Interest Group. You do not need to be a member of [AECT](#) to subscribe. Anyone interested in contributing the EDHP-SIG Vision and Mission, and participating in EDHP-SIG discussion and activities are welcome to subscribe.

### To subscribe:

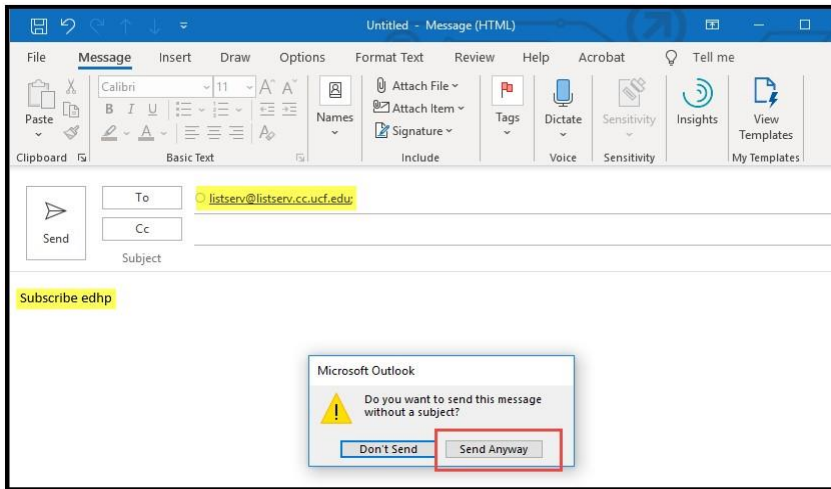
\*Subscribers, please note: You will only use the <mailto:listserv@listserv.cc.ucf.edu> email address to Subscribe. After you are Subscribed to the EDHP list, you will use the address [EDHP@listserv.cc.ucf.edu](mailto:EDHP@listserv.cc.ucf.edu) to send messages back and forth to the discussion group.

Step 1. Construct a Subscribe email to Listserv® for the EDHP list.



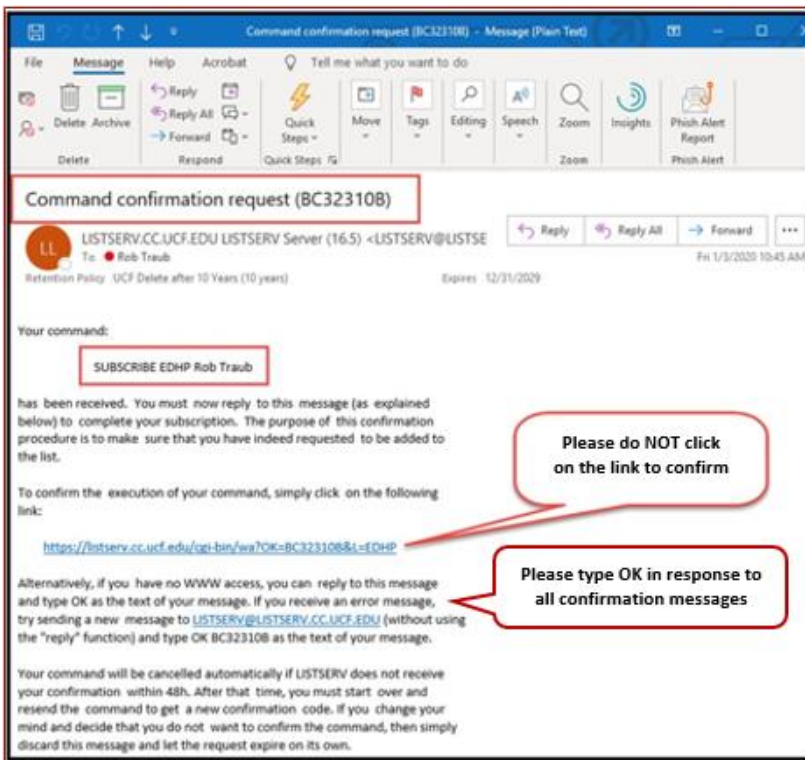
<sup>1</sup> As stated in the third of [17 Sustainable Development Goals](#), endorsed by all members of the state of the United Nations

Step 2. Leave “Subject:” empty and select “Send Anyway.”

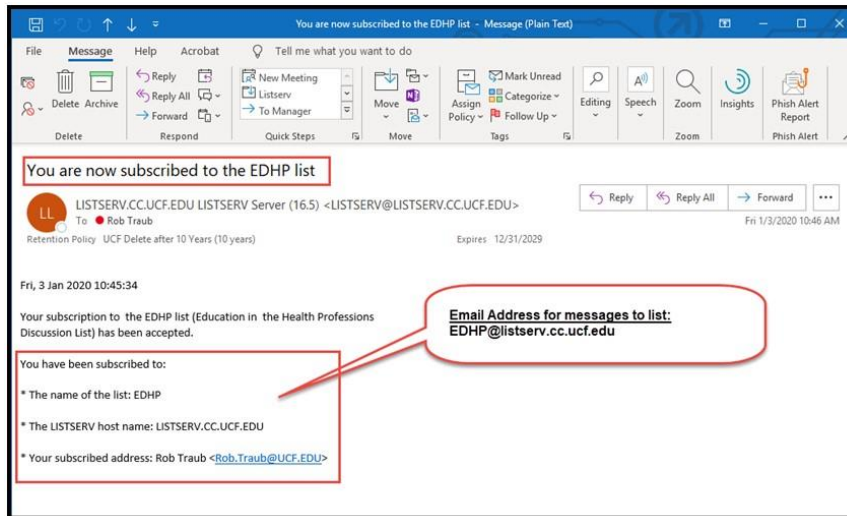


Step 3. The Confirmation Security Settings in Listserv® will send a confirmation email with link to confirm the Subscriber email address was not spoofed and is a valid email address.

Step 4. Respond by typing “OK” to confirm your subscription. The Listserv® will process the request and add you as a Subscriber to the EDHP list. Do NOT click the link.



Step 5. You will receive a “Subscribed” confirmation email from Listserv® showing that your email address was confirmed as valid and that you are now Subscribed to the Listserv® list named EDHP.



### To post message:

Send an email to [EDHP@listserv.cc.ucf.edu](mailto:EDHP@listserv.cc.ucf.edu) from the email address that is subscribed to the list. Messages from nonsubscribed addresses will be rejected. You may be asked to confirm your post. Please respond by typing "OK." Do **NOT** click on the confirmation link. The Listserv® will then process and post your message.

Please be sure to follow appropriate [Netiquette](#) when posting messages, and please limit posts to information relevant to the EDHP-SIG members and events only. We consider the EDHP-SIG a forum for academic discourse that is continually aligned with the mission and vision of the SIG. We support the sharing of research and theory from academic endeavors such as journal articles, special themed issues of academic journals, published research, and relevant academic conferences and presentations that engage SIG members in transdisciplinary collaboration. We also encourage educators and designers to share open access resources that are not related to fee-based products and services.

As such, we believe the EDHP-SIG listserv would not serve the members well as an arena for promoting or-profit courses, certificates, and assessments, or other personal products or services. Though many of the EDHP-SIG members are proprietors of fee based technology and industry resources, to maintain the EDHP-SIG's academic and scholarly focus, the marketing of educational products and services would be more appropriate for a different venue outside of the EDHP-SIG. We appreciate each member's adherence to the mission and vision of the SIG along with the Listserv guidelines. Our desire is to keep the Listserv communications unmoderated.

Posting of any inappropriate messages will result in immediate removal from the List. If you subscribe to Listserv, your email may be viewable to other subscribers.

### To unsubscribe:

Send email to [LISTSERV@listserv.cc.ucf.edu](mailto:LISTSERV@listserv.cc.ucf.edu) with "signoff EDHP" in the body of the message (subject line is irrelevant and can be left blank). The message should be sent from the email address that you want to subscribe.

For any additional comments, questions, or concerns regarding the EDHP Listserv or the EDHP-SIG, please contact Dr. Atsusi "2c" Hirumi at [Atsusi.Hirumi@ucf.edu](mailto:Atsusi.Hirumi@ucf.edu)